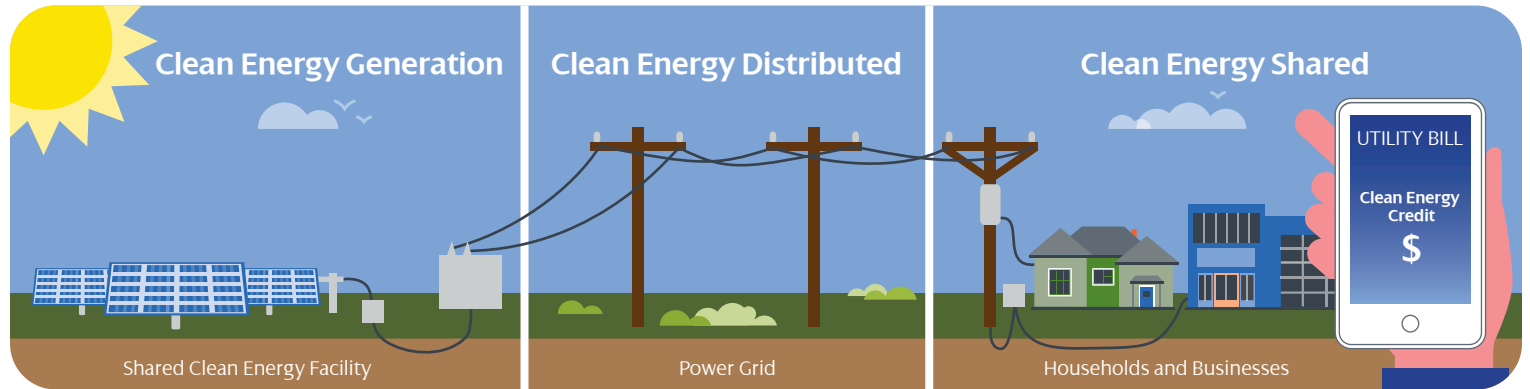


# Shared Clean Energy Facility Program

Shared Clean Energy Facility (SCEF) Projects provide locally generated, renewable, low-carbon clean energy. The energy from these clean energy projects will benefit all of us in Connecticut for generations to come. In order to more directly share the benefits of these new facilities, some customers will receive a credit on their electric bill.

## Let's take a look at how Shared Clean Energy works



## Why Clean Energy?

Clean energy contributes to a cleaner and healthier environment for the community. This program extends the benefits of clean energy to customers who otherwise may not be able to install clean energy generation for their home or business.

## How does it work?

We will identify up to 225 MW of energy from renewable sources over 6 years for this program. As these projects are built and become operational, Eversource and UI will select customers to enroll as participants, or "subscribers," to each project. With a subscription to a Shared Clean Energy Facility, participating customers will receive a monthly bill credit for a portion of the electricity generated by the project for up to 20 years. There is no cost or obligation to participate. This is simply a way to directly share the benefit of clean energy with our customers.

## Who is eligible?

Credits will be issued to low and moderate income residential customers, small businesses, low-income service organizations and landlords of affordable housing facilities as well as commercial, municipal and state customers and other customers who may be unable to install clean energy generation. For definitions of these eligible customers visit us at the links below. Program participation is limited.

## How can I participate in the program?

80% of customers participating in the program will be automatically enrolled by their utility. This includes customers participating in energy assistance or income eligible payment plan programs, small businesses, landlords of affordable housing facilities, and low-income service organizations. These customers do not need to do anything and will automatically receive Shared Clean Energy Credits. If you are selected to participate, your electric utility provider will notify you of your subscription and all associated details.

A small number of participant credits (20%) are open to other eligible customers for consideration in the voluntary enrollment process. To learn more about applying for a voluntary credit please see the links below to complete a Subscriber Enrollment Form.

For more information, visit [uinet.com/SharedCleanEnergyCredit](http://uinet.com/SharedCleanEnergyCredit) or [eversource.com/SCEF](http://eversource.com/SCEF)

**EVERSOURCE**



An AVANGRID Company